

“El Edificio Longoria” Madrid, Spain
Calle Manuel Gonzalez Longoria, 10
Fully Automated Car Parking System



Construction year : **2018**

Employer : **Fernandez Molina Obras Y Servicios, S.L.**

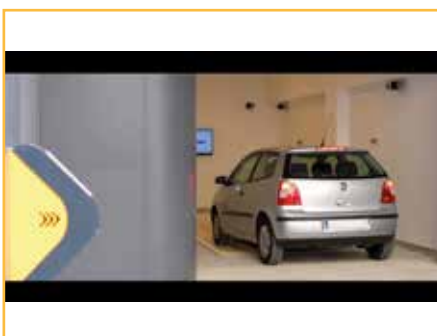
Supplier : **Parkolay**

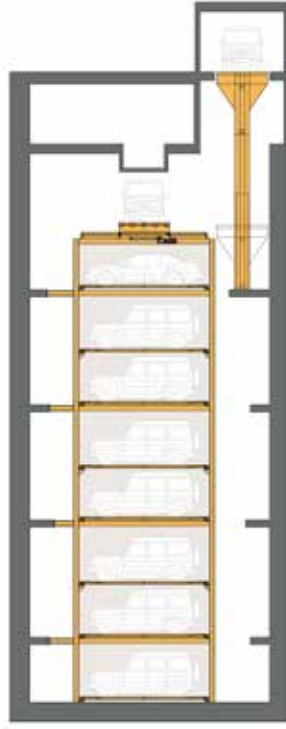
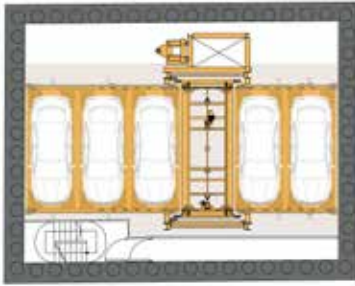
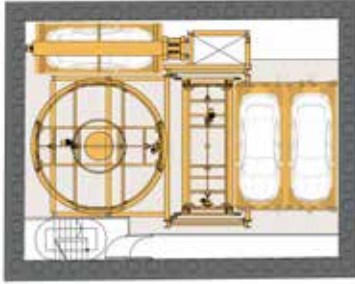
Capacity : **40 Car Parking Spaces**

Model : **Parkule 100**

Application : **Residential Building, Permanent User**

The “El Edificio Longoria 10” building, located in the center of Madrid, is a new housing project built under the most strict criteria of quality and sustainability. The design of this underground solution includes a **Cantilaver Lift** in **Entrance-Exit Room** transporting the vehicles to the **Parkule 100 Lift** travelling in a depth of **20 m.** with a speed of **0.5 m/s.** The solution also includes a **Turntable** during transfer process that allows an easy entry and exit to the transfer area, without many maneuvering skills from the Users. This parking facility can welcome up to **40 vehicles.** (90% SUV) Thanks to the World’s fastest pallet transfer mechanism developed in-house, the retrieval time is minimal as such that 33% of the total parking capacity can be evacuated with in maximum one hour.





“El Edificio Longoria” Madrid, Spain Calle Manuel Gonzalez Longoria, 10

Technical Specifications

Construction year	: 2018
Number of parking spaces	: 40
Number of parking floors	: 8
Parking floor area	: 87 m ²
Parking area length	: 6.55 m
Parking area width	: 13.10 m
Parking system height	: 21.80 m
Parking system structure volume	: 1.870 m ³
Construction volume per parking space	: 46.7 m ³

Access Times (Approx.)

Times for consecutive parking operations in Automatic Operation mode:

(Time of vehicle delivery by driver is assumed as 45 sec.)

Shortest parking time : 165 sec.

Longest parking time : 350 sec.

Average parking time : 257 sec.

Number of simultaneous parking operations : 1

Vehicle dimensions (Maximum)

Length	: 5.25 m
Width	: 2.10 m
Height	: 1.60 m (3 Parking Spaces)
	: 2.00 m (37 Parking Spaces)
Weight	: 2.5 t

System Type: Fully automated car parking system

Model : **Parkule 100 and Cantilever Lift**

Technology : Automatic Transfer Mechanism and Turntable

Standart : TS EN 14010

